

Corfu

Distance to Town: 40 minute walk

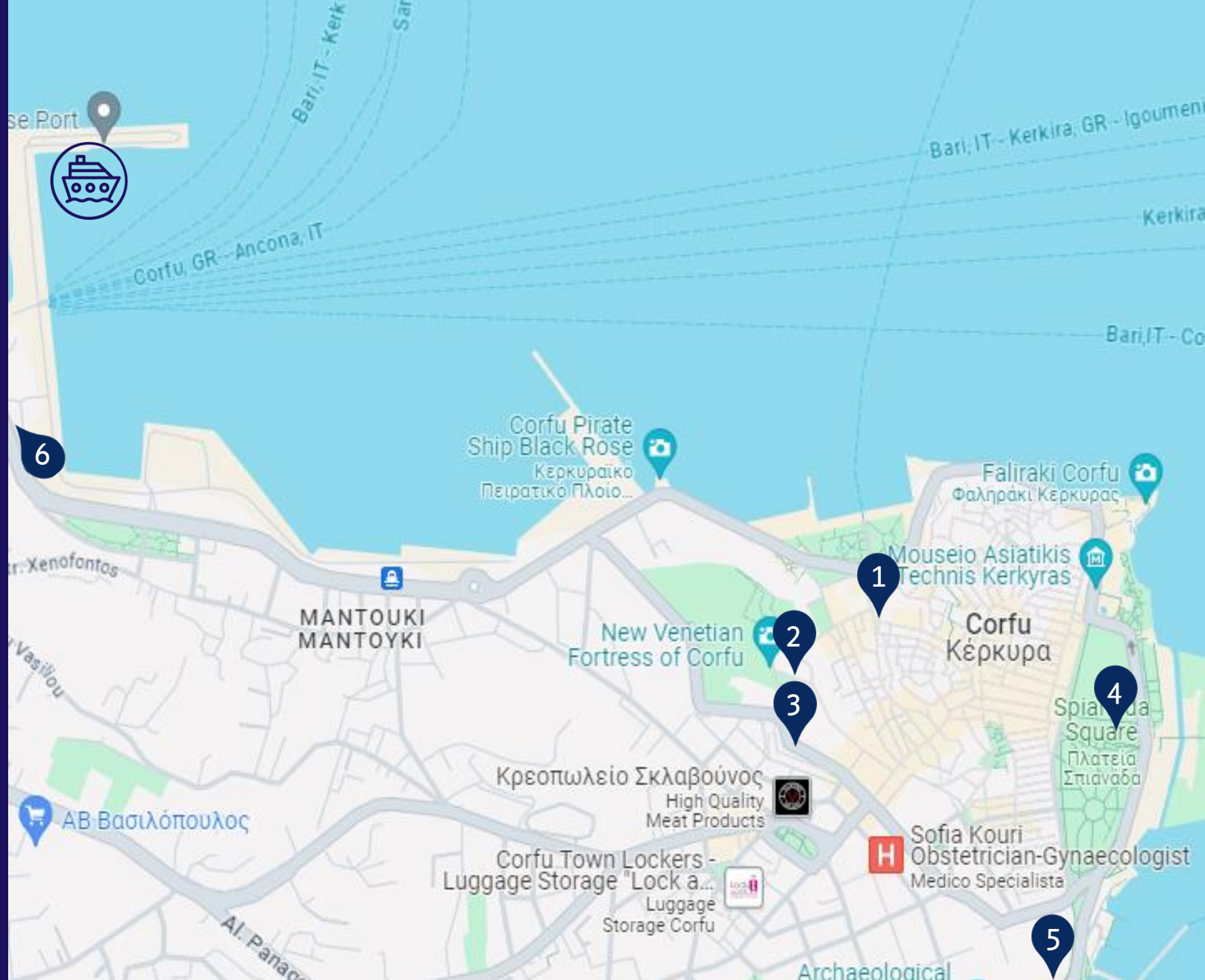
Shopping: Take a stroll around Corfu's Central Market, marked No. 3 on the map



Docking Location

Top Sights:

- 1 Corfu Old Town
- 2 New Fortress
- 3 Shopping Street
- 4 Spianada Square
- 5 Archaeological Museum
- 6 Dassia Beach



EXPLORE ASHORE

CORFU

USEFUL INFORMATION



CURRENCY
EUROS



LANGUAGE
GREEK



DISTANCE TO TOWN
AROUND A 40 MINUTE WALK

AT A GLANCE

Awash with colourful flowers, Corfu is big on beauty. It's known as the Emerald Isle, and its golden beaches, lush green landscape and colourful villages will have you constantly reaching for your camera.

If you're looking to explore Corfu town, you'll find the centre is a little bit further out from the cruise port, making the walk around 40 minutes. You'll find a short shuttle bus service taking guests from the ship to the cruise terminal only. From here, you'll find taxis outside the terminal to help you explore further afield, it's always best to check the price before heading out.

Alternatively, there's a public bus service just outside the terminal to Corfu's Old Quarter costing around €2 each way per person. If you fancy exploring some more, there's a Hop-On Hop-Off bus that runs from outside the port gates. If you continue to walk through the port you'll see this service just by the port gates.

OUT AND ABOUT

New Fortress: The historical centre of Corfu is marked by two fortresses. Along the east side, there's the Old Fortress on the sea, while on the west side there's the New Fortress. In the past, the two fortresses of Corfu were linked by large walls.

Spianada Square: This square is known for being one of the largest squares in Corfu and one of the largest square's in Greece. It's located in front of the Old Fortress in the centre of Corfu.

The Archaeological Museum: This impressive museum was built between 1962 to 1965. It was constructed on a site that was donated by the Municipality of Corfu and was inaugurated in 1967.

BEST BEACHES

If you're wanting to top up the tan then Corfu provides many opportunities to relax on the beach and enjoy the glistening Greek sands. Head on over to Dassia Beach which is located within a 20 minute drive from the port. You'll find a few bars and restaurants along the beach, if you fancy diving into a little midday snack.

SHOPPING

The main shopping street is Theotoki in the new town. This is where you'll find many boutiques along with a well know yellow labelled English favourite, otherwise known as M&S. There are many shops in the old town. A short 10 minute drive from the cruise port will have you exploring in no time.

DO IT LIKE THE LOCALS

Experience the essence of Corfu town by indulging in the local atmosphere. Find yourself meandering through the narrow streets of the Old Town and losing yourself in the maze of charming alleyways lined with colourful buildings, quaint cafes, and hidden gems. If you're feeling peckish why not test out the local flavours of the Greek cuisine with dishes made up of French and Venetian influence. Many dishes are cooked up with wine, garlic and eastern spices. These aromas are bound to get those noses twitching and those taste buds tingling.

JUST SO YOU KNOW

Whilst the summer months are becoming very hot, we always advise to take plenty of water and sunscreen when you're out and about. Pick-pockets can operate in crowded areas, so please be mindful of your possessions.

For more information on what to do ashore, speak to the Destination Services team on Deck 5